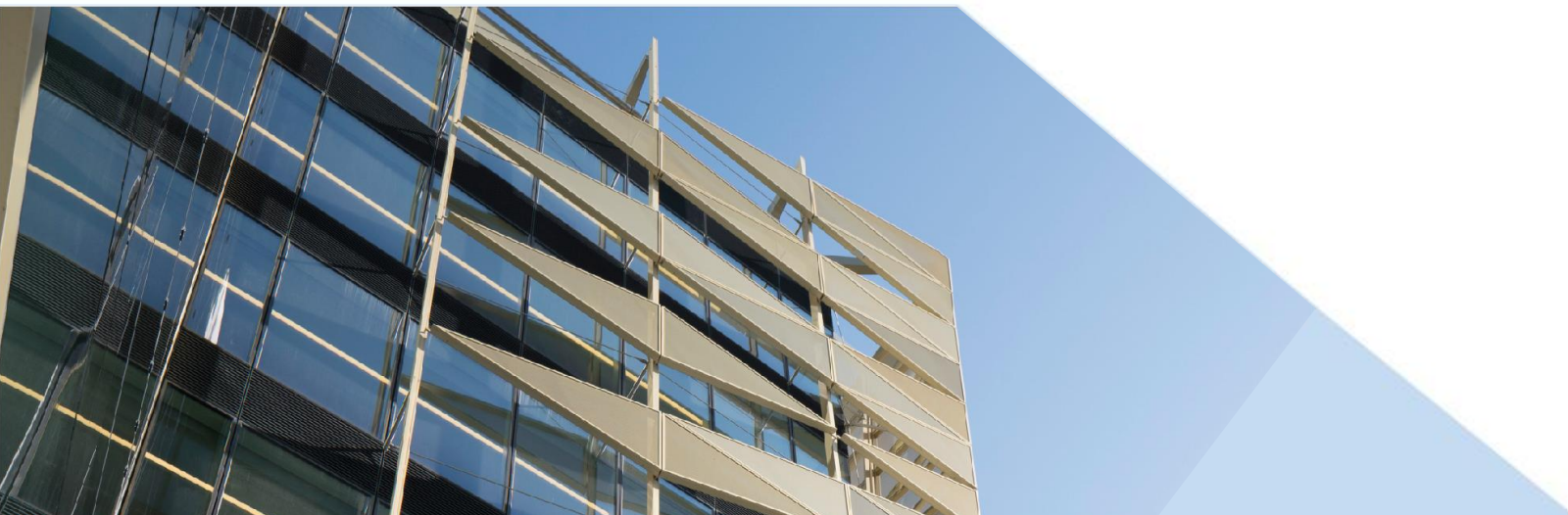




Banc Ceannais na hÉireann
Central Bank of Ireland

Eurosystem



Solvency II quantitative reporting 2024 submission dates

Undertakings with 31 December year-end

	Reference date	Submission deadline date	
		Solo	Group
Annual returns	31-Dec-23	07-Apr-24	19-May-24
	31-Dec-24	08-Apr-25	20-May-25
Quarterly returns	31-Dec-23	04-Feb-24	17-Mar-24
	31-Mar-24	05-May-24	16-Jun-24
	30-Jun-24	04-Aug-24	15-Sep-24
	30-Sep-24	04-Nov-24	16-Dec-24
	31-Dec-24	04-Feb-25	18-Mar-25



Including Non-standard year-end dates

Reference date	Quarterly		Annual	
	Submission deadline date Solo	Submission deadline date Group	Submission deadline date Solo	Submission deadline date Group
31-Dec-23	04-Feb-24	17-Mar-24	07-Apr-24	19-May-24
31-Jan-24	06-Mar-24	17-Apr-24	08-May-24	19-Jun-24
29-Feb-24	04-Apr-24	16-May-24	06-Jun-24	18-Jul-24
31-Mar-24	05-May-24	16-Jun-24	07-Jul-24	18-Aug-24
30-Apr-24	04-Jun-24	16-Jul-24	06-Aug-24	17-Sep-24
31-May-24	05-Jul-24	16-Aug-24	06-Sep-24	18-Oct-24
30-Jun-24	04-Aug-24	15-Sep-24	06-Oct-24	17-Nov-24
31-Jul-24	04-Sep-24	16-Oct-24	06-Nov-24	18-Dec-24
31-Aug-24	05-Oct-24	16-Nov-24	07-Dec-24	18-Jan-25
30-Sep-24	04-Nov-24	16-Dec-24	06-Jan-25	17-Feb-25
31-Oct-24	05-Dec-24	16-Jan-25	06-Feb-25	20-Mar-25
30-Nov-24	04-Jan-25	15-Feb-25	08-Mar-25	19-Apr-25
31-Dec-24	04-Feb-25	18-Mar-25	08-Apr-25	20-May-25

